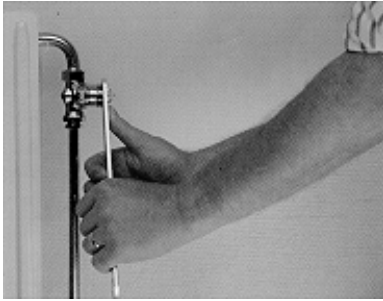
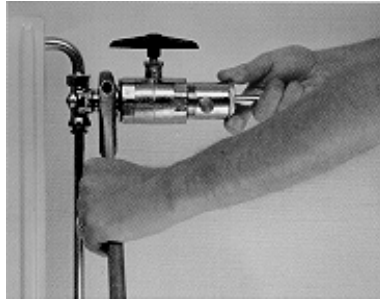


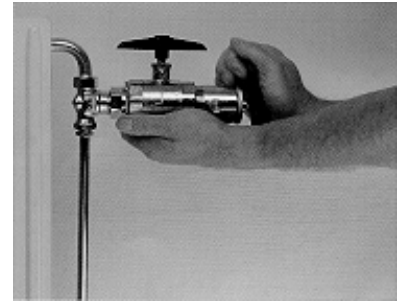
The Macon Insert Changer allows removing an insert without shutting down a hot water or low pressure steam heating system. Follow the easy steps under the photographs. Reverse the procedure when re-installing the insert.



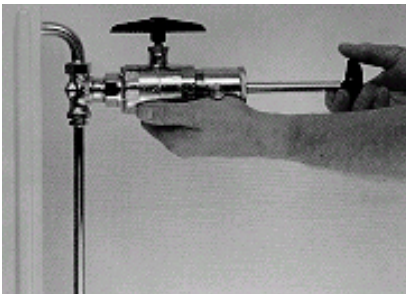
1. Using a 15/16" or 23 mm wrench, loosen the insert in the valve body by turning counterclockwise to break the metal to metal seal. Do not turn the insert out. Turn it back clockwise, tighten it lightly, if needed to prevent any objectionable leakage.



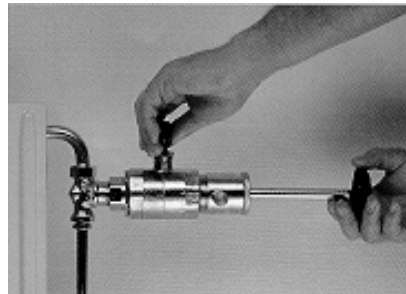
2. Place the socket of the insert changer onto the valve insert. Press in the stem handle of the tool to ensure a firm engagement.



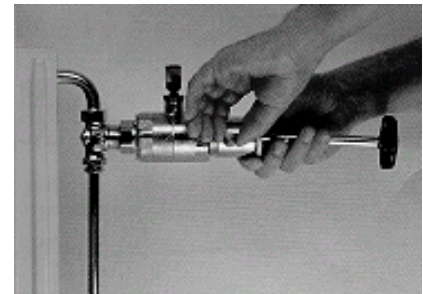
3. While continuing to press in on the stem handle, engage the thread of the union tailpiece of the changer with the thread on the neck of the valve. Turn the changer onto the valve neck until it is firmly in place and sealed.



4. Check that the drain cock is closed and that the bonnet of the outer chamber of the changer is assembled securely. Turn the changer handle counterclockwise at least 3 full turns to ensure that the insert is free. Pull out on the changer handle to clear the ball valve.



5. Close the ball valve by turning its handle so that it is across the axis of the changer.



6. Open the drain cock to relieve water or steam pressure in the chamber.



7. Holding the changer so that it does not turn, turn the bonnet out of the chamber.



8. Remove the insert and replace it.

ACCESSORIES

**Suitable for all
NT - T23000 Inserts**

This page left blank intentionally.